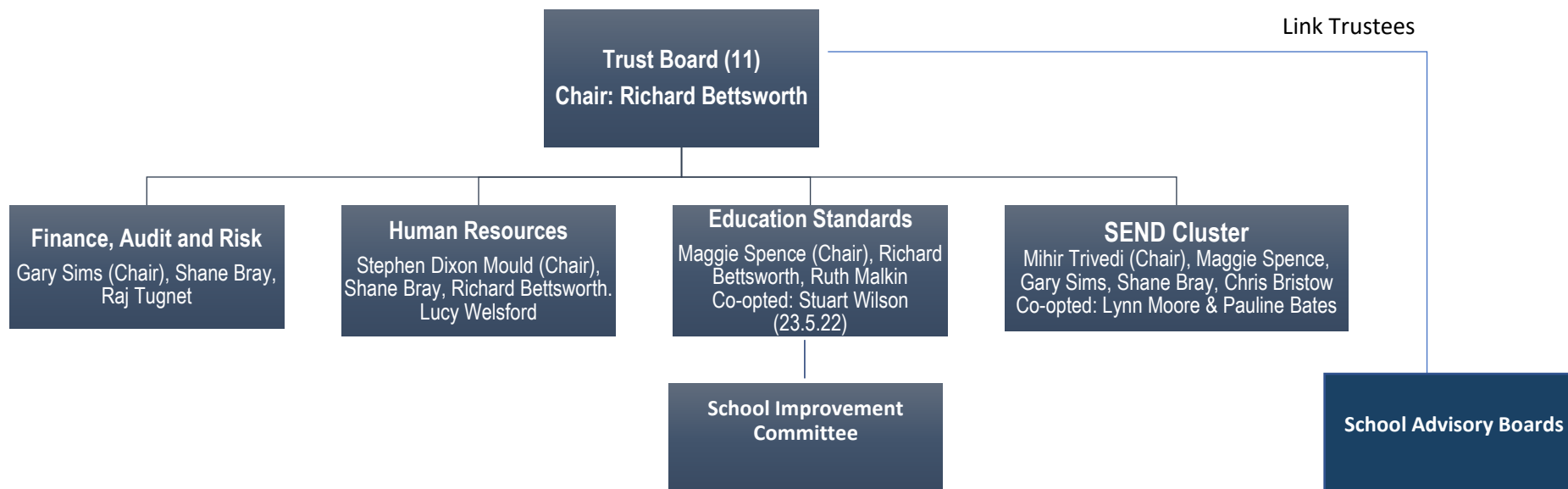




Trust Board Structure 2021-22



	Trustees	Appointing Body	Term End Date	Specialism
1	Richard Bettsworth	Co-opted	5-Sept-23	PR & Marketing
2	Chris Bristow	Co-opted	31-Jul-22	SEND & Education
3	Shane Bray	Members	23-Oct-23	Strategy
4	Stephen Dixon-Mould	Members	25-Jan-26	HR
5	Ruth Malkin	Members	01-Dec-25	Governance & risk
6	Margaret Spence	Diocese of Leicester	8-Jul-25	Ethos & Education
7	Paul Stone	Ex-officio	Ex-officio	Education
8	Gary Sims	Members	28-Feb-26	Finance
9	Mihir Trivedi	Members	7-Aug-25	Regulatory Change Management
10	Raj Tugnet	Members	22-Aug-25	Business development/strategy
11	Lucy Welsford	Members	25-Jan-26	
12	Vacancy	Diocese of Leicester		

Members:

1. DLET – Carolyn Lewis
2. Chair of the Board – Richard Bettsworth
3. Representative of Kibworth CE – Rob Woolston
4. Representative of Parkland – Celia Varley